

MP-954GPS

User's Manual

Edition 1.0



Copyright

Copyright 2006 all rights reserved. This document is copyrighted and all rights are reserved. The information in this document is subject to change without prior notice to make improvements to the products.

This document contains proprietary information and protected by copyright. No part of this document may be reproduced, copied, or translated in any form or any means without prior written permission of the manufacturer.

All trademarks and/or registered trademarks contains in this document are property of their respective owners.

Disclaimer

The company shall not be liable for any incidental or consequential damages resulting from the performance or use of this product.

The company does not issue a warranty of any kind, express or implied, including without limitation implied warranties of merchantability or fitness for a particular purpose.

The company has the right to revise the manual or include changes in the specifications of the product described within it at any time without notice and without obligation to notify any person of such revision or changes.

Trademark

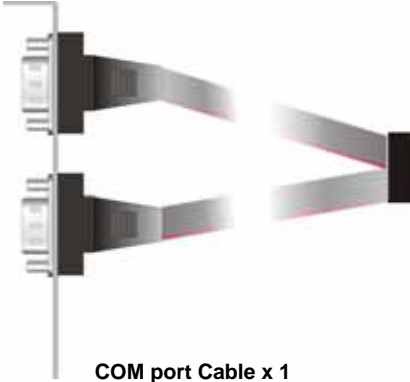
All trademarks are the property of their respective holders.

Packing List:

Hardware :

MP-954GPS Mini-PCI GPS Card x1

Cable Kit :



Printed Matter :

MP-954GPS User's Manual

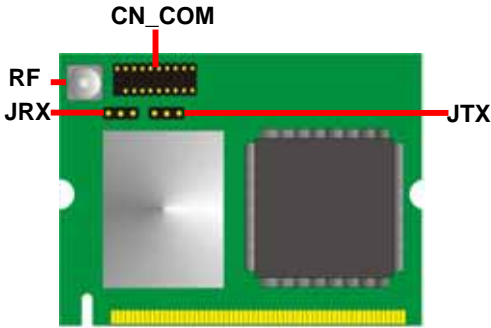
CD Content :

Drivers & User's Manual

1.1 <Product Specification>

| General Specification | |
|-----------------------|-----------------------------------------------------------------------------|
| Form Factor | Mini-PCI TYPE III B |
| Controller | OXFORD OXmPCI954 |
| Features | Three 16C950 High performance UART channels, first channel for GPS |
| GPS Chipset | SiRF Star III |
| GPS Features | Tracking Sensitivity: -159dBm Support NMEA 0183 and SiRF binary protocol |
| GPS Baud Rate | 4,800 bps |

1.2<Connector Assignment >



Connector: **CN_COM**

Type: 20-pin (10 x 2) header

| Pin | Description | Pin | Description |
|-----|-------------|-----|-------------|
| 1 | DCD1- | 2 | RX1- |
| 3 | TX1- | 4 | DTR1- |
| 5 | Ground | 6 | DSR1- |
| 7 | RTS1- | 8 | CTS1- |
| 9 | RI1- | 10 | N/C |
| 11 | DCD2- | 12 | RX2- |
| 13 | TX2- | 14 | DTR2- |
| 15 | Ground | 16 | DSR2- |
| 17 | RTS2- | 18 | CTS2- |
| 19 | RI2- | 20 | N/C |

Connector: **JRX**

Type: 3-pin (3 x 1) header

| Pin | Description | Pin | Description | Pin | Description |
|-----|-------------|-----|-------------|-----|-------------|
| 1 | VCC | 2 | RX | 3 | Ground |

Connector: **JTX**

Type: 3-pin (3 x 1) header

| Pin | Description | Pin | Description | Pin | Description |
|-----|-------------|-----|-------------|-----|-------------|
| 1 | VBAT | 2 | TX | 3 | Ground |

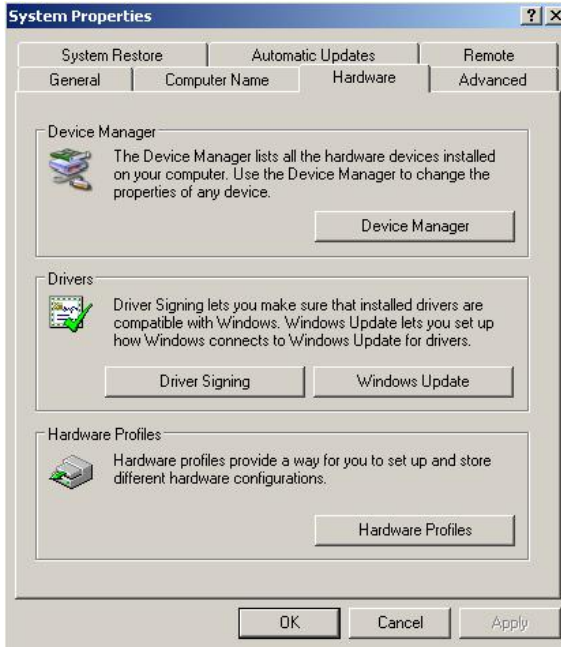
Connector: **RF**

Type: MCX connector

| Pin | Description | Pin | Description | Pin | Description | Pin | Description | Pin | Description |
|-----|-------------|-----|-------------|-----|-------------|-----|-------------|-----|-------------|
| 1 | RF receive | 2 | RF GND | 3 | RF GND | 4 | RF GND | 5 | RF GND |

1.3<Driver Setting>

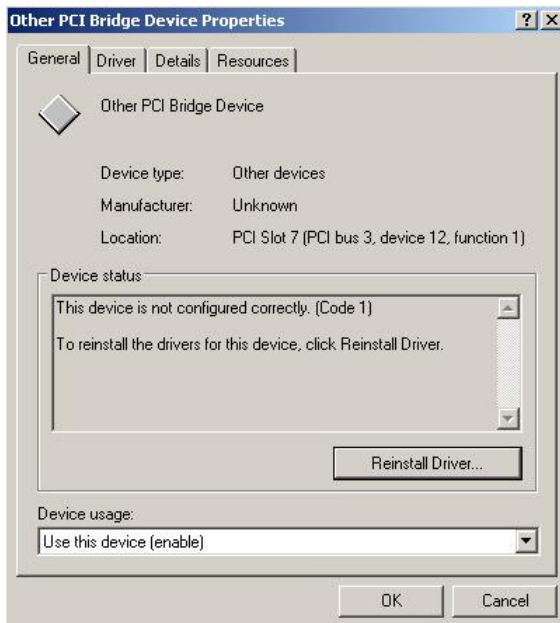
1. Please choose “Device Manager”



2. You can see other devices” Other PCI Bridge Device” and “PCI Serial Port”



4. Please choose "Other PCI Bridge Device" then press Reinstall Driver



5. Please choose "NO, not this time "



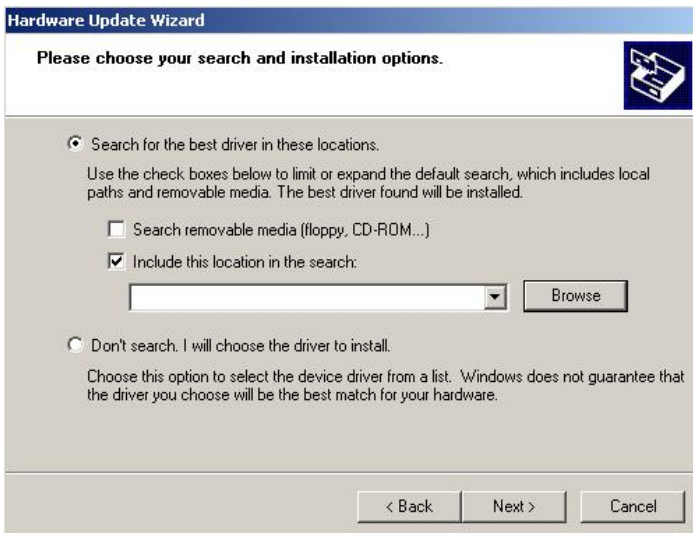
6. Install software for "Other PCI Bridge Device"

Please choose "Install from a list or specific location"



7. Please choose "Search for the best driver in these location"

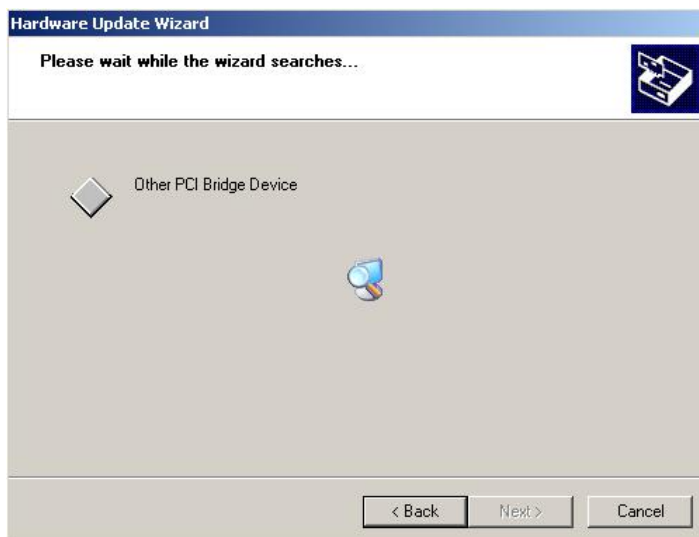
Check "Include this location in the search" then press "Browse"



8. Please select the file location "CDROM:\Driver\MP-954\OXFORD"



9. Installing "Other PCI Bridge Device"



10. Hardware Installation" PCI Function"

Press "Continue Anyway"



11. Completing the hardware update wizard



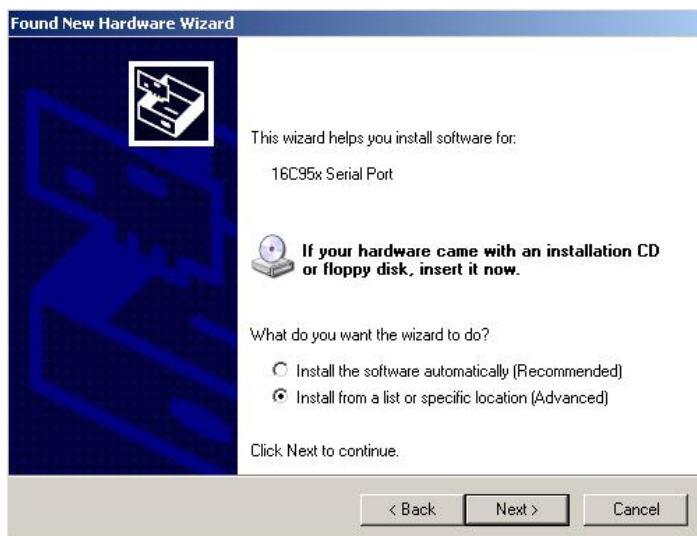
12. Please choose "PCI Serial Port" then press Reinstall Driver

Step same as 5~9, installing for "OX16PCI954 Triple PCI UARTs"



13. Found new hardware wizard "16C95x Serial Port"

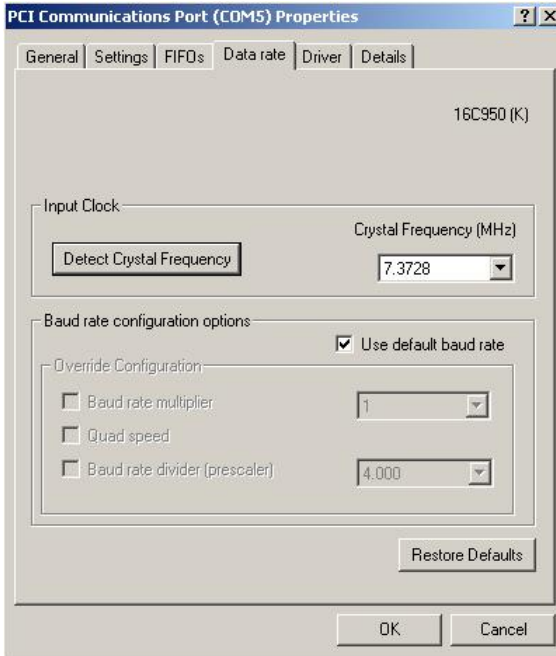
Please choose "Install from a list or specific location"



14. Install step same as 5~9

15. When install finish, please select "PCI Communications port"

Press "Detect Crystal Frequency", then select 7.3728MHz



Contact Information

Any advice or comment about our products and service, or anything we can help you please don't hesitate to contact with us. We will do our best to support you for your products, projects and business

Annso Technology Co., Ltd

| | | |
|---------|---------------------------------------------------------------------------------------------------------|-------------|
| Address | The south faces industry area of Xia Gang Fu Hai road, Chang'an Town,Dongguan City, Guangdong, China | |
| TEL | +86-769-81666360 | 81666395-97 |
| FAX | +86-769-81666306 | |
| Website | http://www.annso.com | |
| E-mail | Sales@annso.com.cn | |

Annso is our trademark of industrial PC division

