

# LV-669

---

## Mini-ITX Motherboard

### User's Manual

Edition 1.0

2006/10/02



*UniChrome Pro*

## **Copyright**

Copyright 2006. All rights reserved. This document is copyrighted and all rights are reserved. The information in this document is subject to change without prior notice to make improvements to the products.

This document contains proprietary information and protected by copyright. No part of this document may be reproduced, copied, or translated in any form or any means without prior written permission of the manufacturer.

All trademarks and/or registered trademarks contains in this document are property of their respective owners.

## **Disclaimer**

The company shall not be liable for any incidental or consequential damages resulting from the performance or use of this product.

The company does not issue a warranty of any kind, express or implied, including without limitation implied warranties of merchantability or fitness for a particular purpose.

The company has the right to revise the manual or include changes in the specifications of the product described within it at any time without notice and without obligation to notify any person of such revision or changes.

## **Trademark**

All trademarks are the property of their respective holders.

---

# Packing List

Please check the package before you starting setup the system

## Hardware:

LV-669 series motherboard x 1

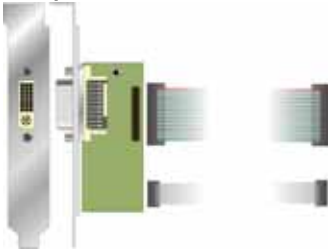
## Cable Kit:



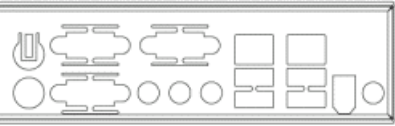
44-pin ATA33 IDE Cable x 1



40-pin ATA100 IDE Cable x 1



Serial ATA Ribbon Cable x 2



I/O Shield



SATA Cable x 1

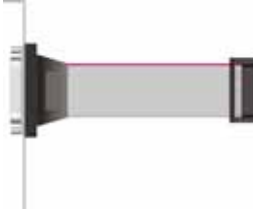


Power Cable x 1

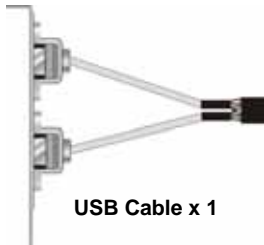


26-pin Slim Type Floppy Cable x 1

DVI output cable kit (LV-669D only)



Printer Port Cable x 1



USB Cable x 1



COM Port Cable x 1

## Printed Matters:

User's Manual x 1

Driver CD x 1

# Index

<b>Chapter 1 &lt;Introduction&gt;</b> .....	<b>7</b>
1.1 <Product Overview>.....	7
1.2 <Product Specification> .....	8
1.3 <Mechanical Drawing>.....	10
1.4 <Block Diagram>.....	11
<b>Chapter 2 &lt; Hardware Setup &gt;</b> .....	<b>12</b>
2.1 <Connector Location>.....	12
2.2 <Jumper Reference>.....	14
2.3 <Connector Reference> .....	15
2.3.1 <Internal Connector>.....	15
2.3.2 <External Connector>.....	15
2.4 <CPU and Memory Setup> .....	16
2.4.1< CPU>.....	16
2.4.2 <Memory> .....	16
2.5 <CMOS ATX Setup>.....	17
2.6 <Enhanced IDE & CF Interface>.....	18
2.7 <Serial ATA Interface> .....	19
2.8 <Floppy Port>.....	20
2.9 <LAN Interface> .....	21
2.10 <Onboard Display Interface>.....	22
2.10.1 <Analog VGA Interface>.....	22
2.10.2 < Digital Display >.....	23
2.11 <Onboard Audio Interface>.....	27
2.12 <USB2.0 Interface>.....	28
2.13 <GPIO Interface> .....	30
2.14 <Serial Port Jumper Setting> .....	31
2.15 <Power and Fan Connector>.....	33

2.15.1 <Power Input> .....	33
2.15.2 <Power Output>.....	34
2.15.3 <Fan Connector>.....	34
2.16 <Indicator and Switch>.....	35
<b>Chapter 3 &lt;System Configuration&gt;.....</b>	<b>37</b>
3.1 <SATA RAID Configuration>.....	37
3.2 <Audio Configuration> .....	39
3.3 <Display Configuration> .....	40
<b>Chapter 4 &lt;BIOS Setup&gt; .....</b>	<b>44</b>
<b>Appendix A &lt;I/O Port Pin Assignment&gt; .....</b>	<b>46</b>
A.1 <IDE Port> .....	46
A.2 <Floppy Port> .....	48
A.3 <Serial ATA Port> .....	48
A.4 < CRT Port >.....	49
A.5 <Serial Port> .....	49
A.6 <LAN Port> .....	49
<b>Appendix B &lt;Flash BIOS&gt;.....</b>	<b>50</b>
B.1BIOS Auto Flash Tool .....	50
B.2Flash Method .....	50
<b>Appendix C &lt;System Resources&gt; .....</b>	<b>50</b>
<b>Appendix D &lt;Watch Dog timer Setting &gt;.....</b>	<b>55</b>
<b>Contact Information.....</b>	<b>57</b>

**(The Page is Left For Blank)**

## Chapter 1 <Introduction>

### 1.1 <Product Overview>

**LV-669** is the Mini-ITX motherboard based on VIA chipset. It integrates VIA embedded chipset for CN700 with VT8237R Plus, DDR 333/400 SDRAM, and serial ATA with RAID to provide the economical embedded platform.

#### **VIA CN700 & VT8237R Plus Chipset**

The board comes with the VIA embedded chipset of CN700, supports DDR 333/400 SDRAM, integrated the S3 Graphics UniChrome Pro IGP graphics core, hardware MPEG-2 acceleration.

The VT8237R Plus provides the board to support Ultra V-Link (533MB/s) with CN700, two serial ATA ports with RAID array function, 6 x USB2.0 ports and 5.1 channel AC97 audio.

#### **Multimedia solution**

Based on VIA CN700 chipset, the board provides 18/24-bit LVDS interface or DVI, which supports dual independent display with CRT.

Onboard AC97 codec provides the high quality of sound including 5.1-channel stereo DACs.

#### **Two LAN Interface**

**LV-669** also comes with two Giga LAN interface, support boot-on-LAN and wake-on-LAN function.

#### **High Speed Hot-plug Interface**

Based on VIA VT8237R Plus the board provides 6 USB2.0 interfaces with up to 480Mbps of transferring rate.

#### **Expanded UCR for remote Operating SETUP Bios Feature**

**Expanded Universal Console Redirection (UCR)** is a feature for monitoring POST messages and running Setup and an operation system from a remote serial terminal.

## 1.2 <Product Specification>

### General Specification

Form Factor	Mini-ITX motherboard
CPU	VIA C7 1.5GHz processor L1/L2 Cache: 128/128KB Front side bus: 400MHz
Memory	1 x 184-pin DDR 333/400 SDRAM up to 1GB, onboard optional 256MB DDR SDRAM Unbuffered, none-ECC memory supported only
Chipset	VIA CN700 and VT8237R Plus
BIOS	Phoenix-Award v6.00PG 4Mb PnP flash BIOS
Green Function	Power saving mode includes doze, standby and suspend modes. ACPI version 1.0 and APM version 1.2 compliant
Watchdog Timer	System reset programmable watchdog timer with 1 ~ 255 sec./min. of timeout value
Real Time Clock	VIA VT8237R Plus built-in RTC with lithium battery
Enhanced IDE	Enhanced IDE interface supports dual channels and up to 4 ATAPI devices at Ultra DMA133 One 40-pin and one 44-pin IDE port onboard One Compact Flash Type II socket on solder side
Serial ATA	VIA VT8237R Plus integrates 2 Serial ATA interface RAID 0, 1 array Technology supported

### Multi-I/O Port

Chipset	VIA VT8237R Plus with Winbond W83697UG controller
Serial Port	Two external & two internal RS-232 serial ports
USB Port	Four external & two internal Hi-Speed USB 2.0 ports with 480Mbps of transfer rate
Parallel Port	One 26-pin internal parallel port
Floppy Port	One slim type Floppy port
K/B & Mouse	PS/2 keyboard and mouse
GPIO	One 12-pin Digital I/O connector with 8-bit programmable I/O interface
Hardware Monitor	Fan speed, CPU temperature and voltage monitoring

### VGA Display Interface

Chipset	VIA CN700 built-in S3 Graphics UniChrome Pro IGP graphics core
Core Frequency	200MHz
Memory	BIOS selectable 16/32/64MB shard with system memory
Display Type	CRT, LCD monitor with analog display onboard 18/24-bit dual LVDS or DVI
Connector	External DB15 female connector on rear I/O panel Onboard 40-Pin LVDS connector(LV-669X only) Onboard 26-Pin DVI connector(LV-669D only)

## Ethernet Interface

Chipset	REALTEK 8110S-32
Type	10Base-T / 100Base-TX /1000Base-TX auto-switching Fast Ethernet Full duplex, IEEE802.3U compliant
Connector	Two External RJ45 connectors with LED on rear I/O panel

## Audio Interface

Chipset	REALTEK ALC655
Interface	5.1 channel surround audio with Line-in, Line-out and MIC-in
Connector	Onboard audio connector with pin header and phone jack Onboard CD-IN connector

## Expansive Interface

PCI	1 x PCI slot supports up to two PCI devices through riser card
Mini PCI	1 x Mini PCI socket support Mini PCI typell
IEEE1394	One IEEE 1394 connector on rear I/O Panel

## Power and Environment

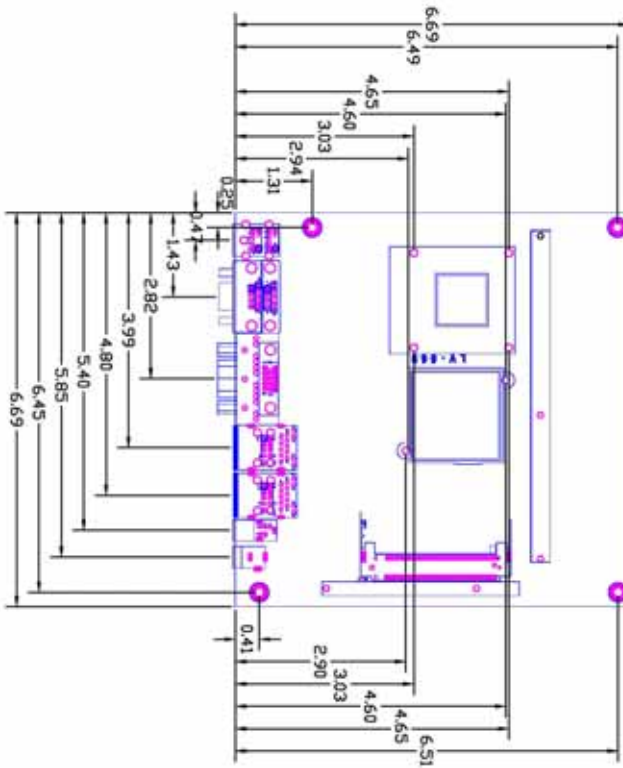
Power Requirement	DC 12V input with external DC Jack or onboard 4-pin connector 8~24V DC input
Dimension	170 (L) x 170 (H) mm
Temperature	Operating within 0 ~ 60 (32 ~ 140 ) Storage within -20 ~ 85 (-4 ~ 185 )

## Ordering Code

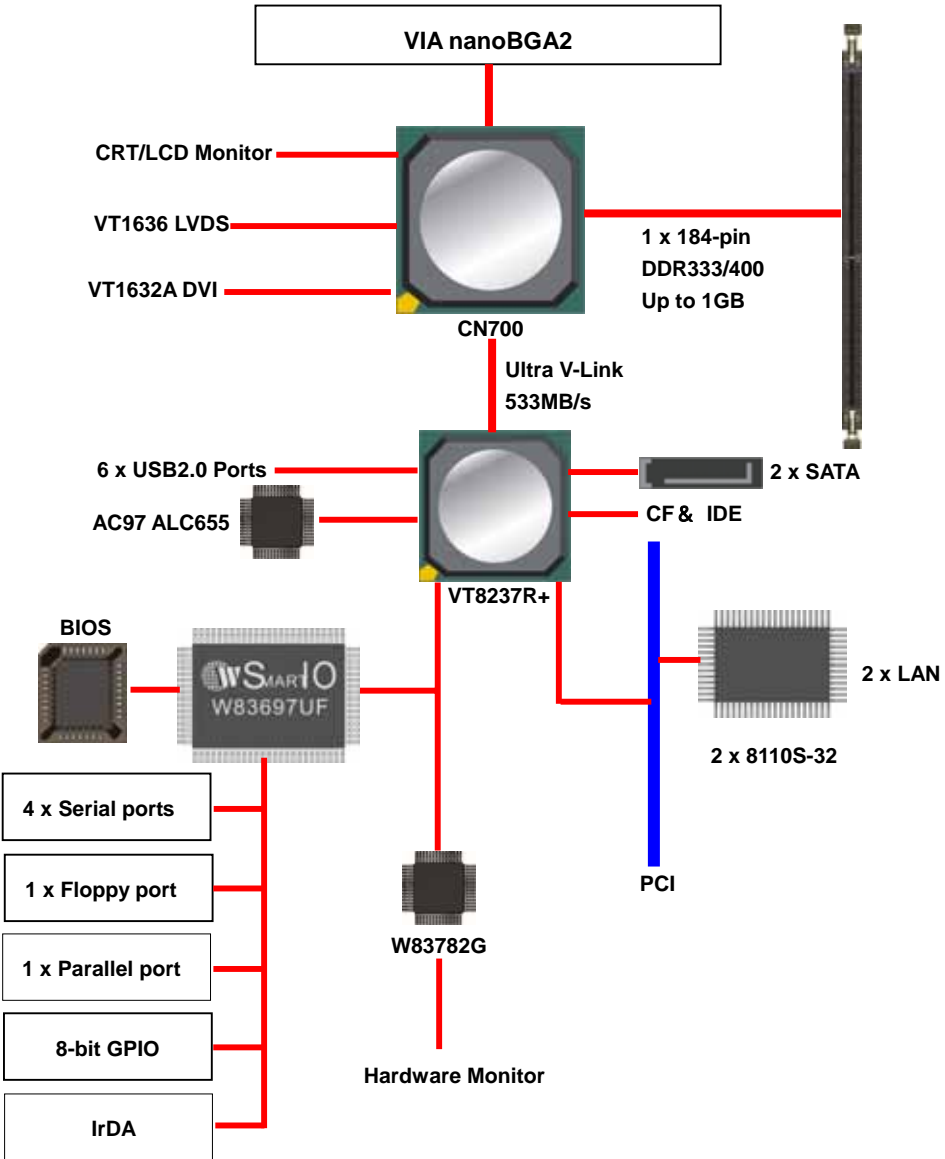
<b>LV669D-P</b>	VIA C7 1.5G with Onboard VGA, AUDIO, Giga LAN, USB2.0, COM, FDD, LPT, GPIO, Mini PCI, SATA, <b>DVI</b>
<b>LV669D-256</b>	The same as LV669D-P and with onboard 256MB DDR SDRAM
<b>LV669X-P</b>	VIA C7 1.5G with Onboard VGA, AUDIO, Giga LAN, USB2.0, COM, FDD, LPT, GPIO, Mini PCI, SATA, <b>LVDS</b>
<b>LV669X-256</b>	The same as LV669X-P and with onboard 256MB DDR SDRAM

The specifications may be different as the actual production.

### 1.3 <Mechanical Drawing>

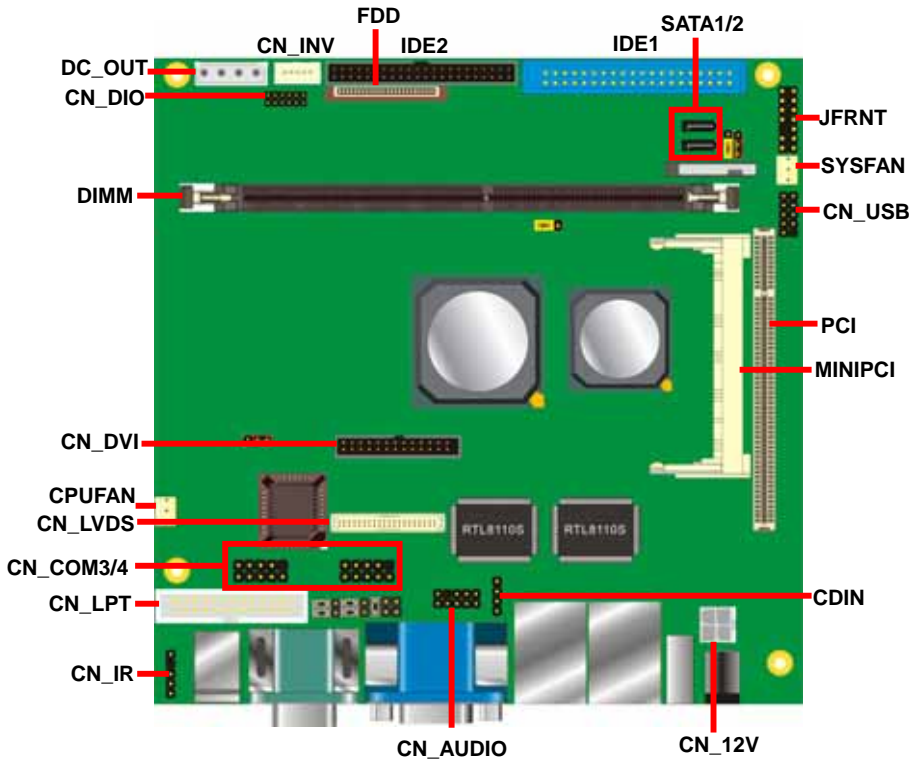


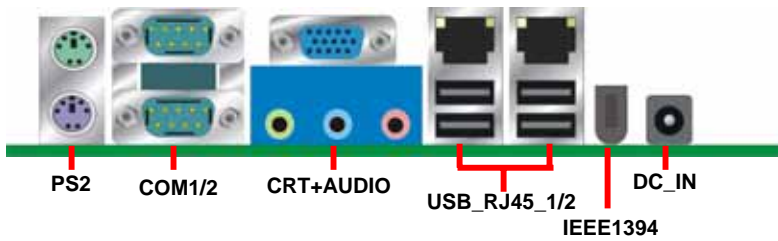
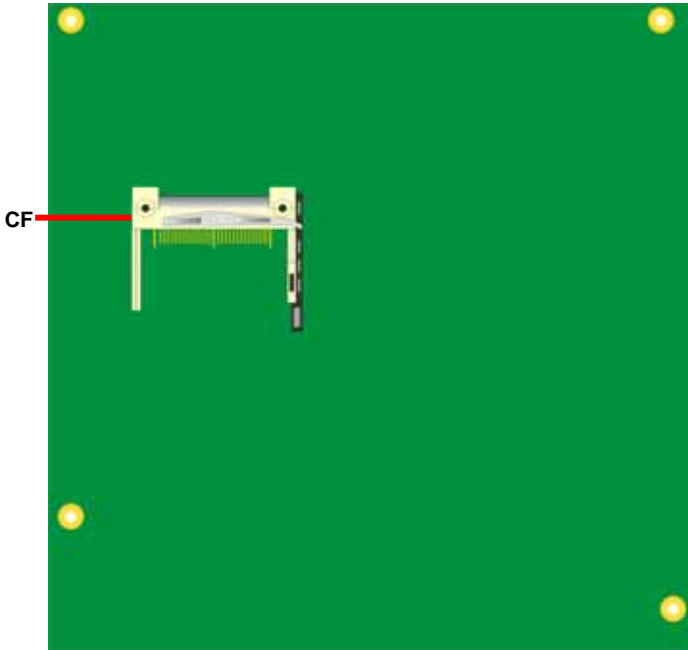
# 1.4 <Block Diagram>



## Chapter 2 <Hardware Setup>

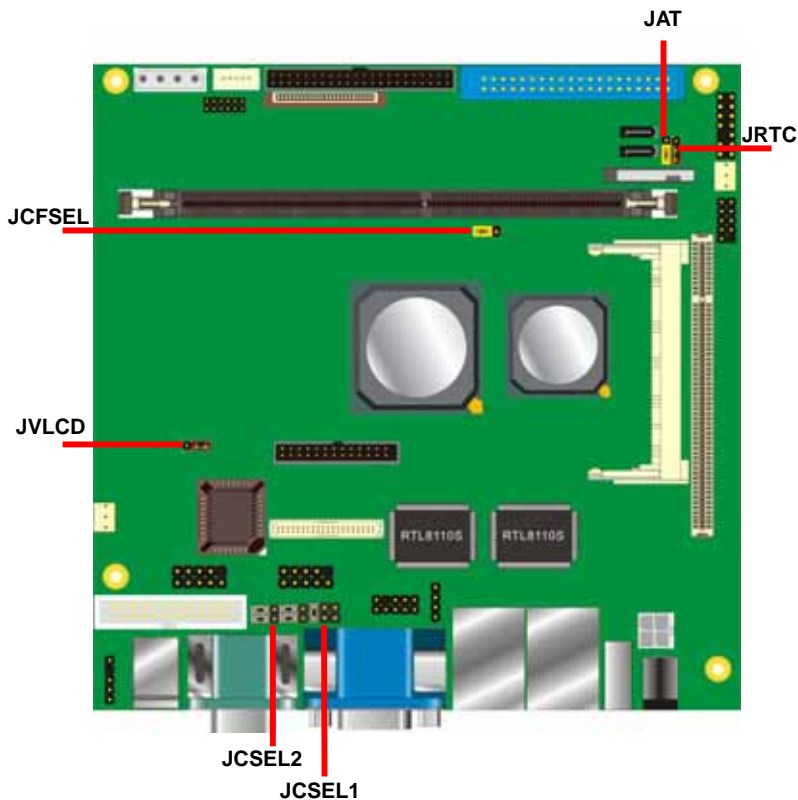
### 2.1 <Connector Location>





## 2.2 <Jumper Reference>

Jumper	Function
JRTC	CMOS Operating/Clear Setting
JCFSEL	Compact Flash address mode setting
JVLCD	LCD Panel Voltage Setting(LV-669X only)
JAT	AT/ATX mode setting
JCSEL1/2	COM2 RS232/422/485 mode setting



## 2.3 <Connector Reference>

### 2.3.1 <Internal Connector>

Connector	Function	Remark
DIMM	184-pin DDR SDRAM DIMM	Standard
IDE1	40-pin primary IDE connector	Standard
IDE2	44-pin secondary IDE connector	Slim
FDD	26-pin slim type floppy connector	Slim
SATA1/2	7-pin Serial ATA connector	Standard
CN_12V	4-pin power supply connector	Standard
CN_AUDIO	5 x 2-pin audio connector	Standard
CDIN	4-pin CD-ROM audio input connector	Standard
CN_DIO	6 x 2-pin digital I/O connector	Standard
CN_USB	5 x 2-pin USB connector	Standard
CPUFAN	3-pin CPU cooler fan connector	Standard
SYSFAN	3-pin system cooler fan connector	Standard
CN_COM3/4	5 x 2-pin RS232 serial port	Standard
CF	Compact Flash Type II socket	Standard
CN_LVDS	20 x 2-pin LVDS LCD interface( LV669X Only)	Slim
CN_INV	5-pin LCD inverter connector (LV669X Only)	Standard
DC_OUT	4-pin power output connector	Standard
PCI	Slim 32bit PCI slot	Slim
MINIPCI	Mini-PCI socket	Standard
CN_LPT	13 x 2-pin printer connector	Standard
CN_DVI	26-Pin connector(LV669D Only)	Standard
JFRNT	14-pin switch/indicator connector	Standard

### 2.3.2 <External Connector>

Connector	Function	Remark
CRT+AUDIO	DB15 VGA connector+ Audio connectors	Standard
COM1/2	DB9 Serial port connector	Standard
USB_RJ45_1/2	4 x USB and 2 x RJ45 LAN connector	Standard
DC_IN	DC 8~24V input jack	Standard
PS2	PS/2 keyboard and mouse connector	Standard
IEEEE1394	One IEEE1394 connector on rear I/O panel	Standard

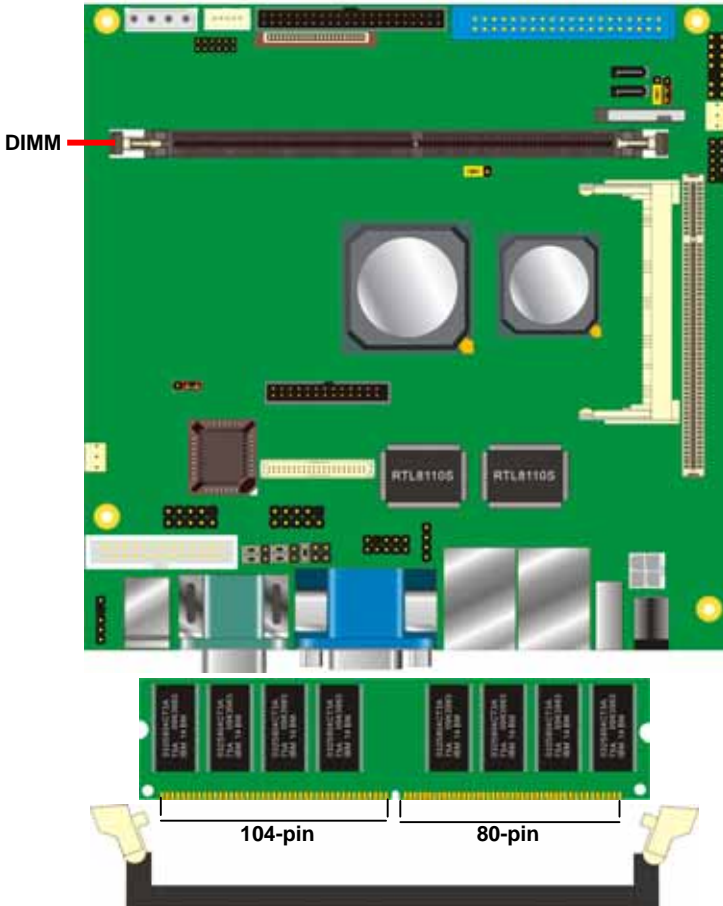
## 2.4 <CPU and Memory Setup>

### 2.4.1 < CPU>

The board supports VIA C7 processor, default ratio is C7 1.5G with cooler.

### 2.4.2 <Memory>

The board supports one 184-pin DDR333/400 SDRAM and up to 1GB of capacity, only non-ECC, unbuffered memory is supported.



Please check the pin number to match the socket side well before installing memory module.

## 2.5 <CMOS ATX Setup>

The board's data of CMOS can be setting in BIOS. If the board refuses to boot due to inappropriate CMOS settings, here is how to proceed to clear (reset) the CMOS to its default values.

**Jumper: JRTC**

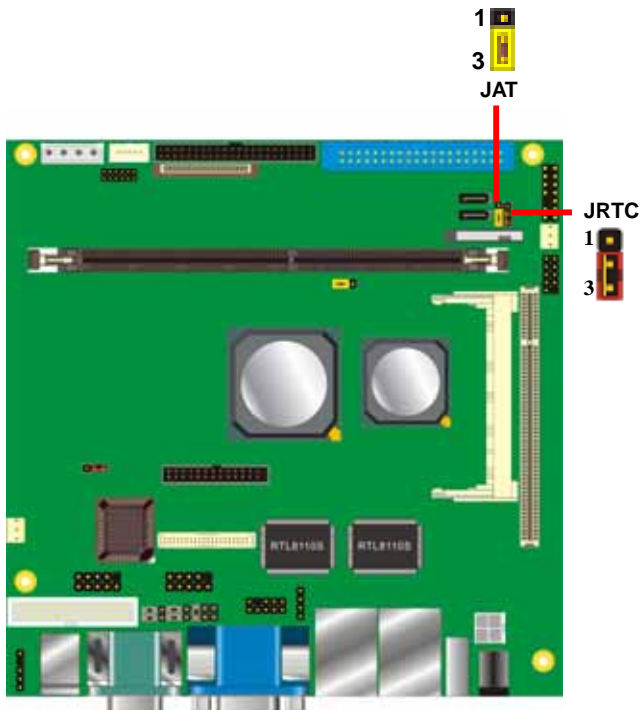
**Type: Onboard 3-pin jumper**

JRTC	Mode
1-2	Clear CMOS
2-3	Normal Operation
Default setting	

**Jumper: JAT**

**Type: Onboard 3-pin jumper**

JAT	Mode
1-2	AT mode
2-3	ATX mode -default
Default setting	



## 2.6 <Enhanced IDE & CF Interface>

The board supports two enhanced IDE interface, dual channel for 4 ATAPI devices with ATA33/66/100/133. Based on embedded application, the board has one 44-pin IDE connector +5V supported for disk on module.

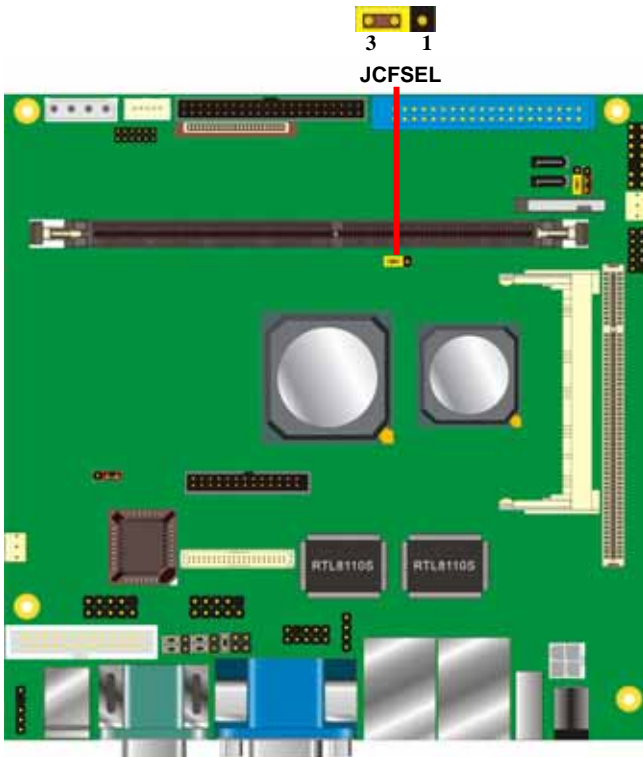
The board also provides a Compact Flash Type II socket with jumper (**JCFSEL**) selectable slave/Master mode on secondary IDE channel.

Jumper: **JCFSEL**

Type: onboard 3-pin header

JCFSEL	Mode
1-2	Master
2-3	Slave

Default setting

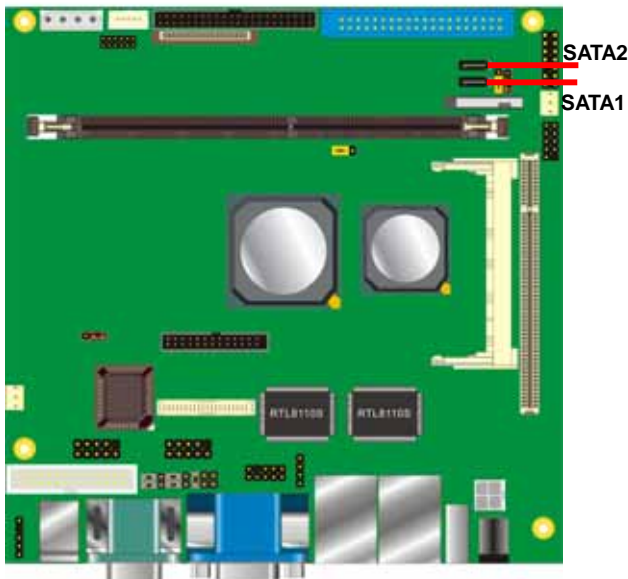


## 2.7 <Serial ATA Interface>

Based on VIA VT8237R Plus Southbridge, the board supports two Serial ATA interfaces with RAID 0 and 1 array function. The following is the list of the specification of the Serial ATA.

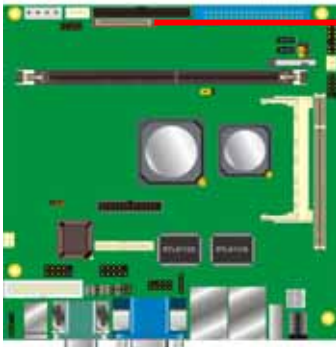
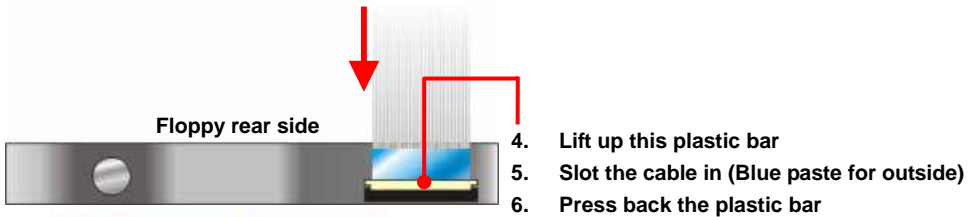
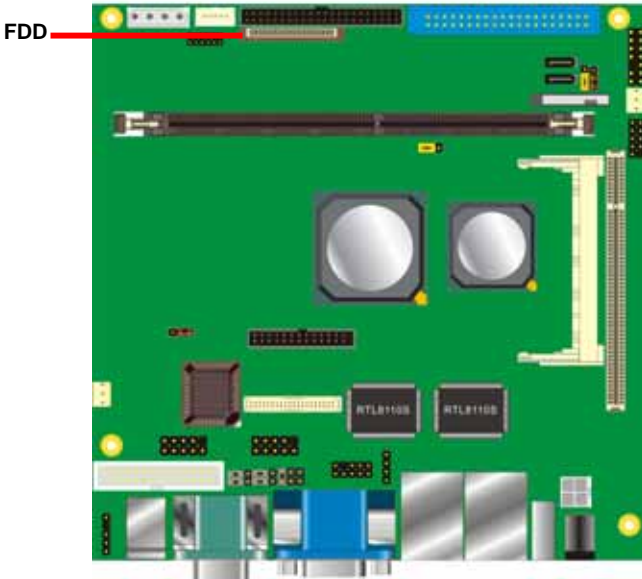
1. Complies with Serial ATA Specification Revision 1.0
2. Dual Channel master mode PCI
3. On-chip two-channel Serial ATA (S-ATA) PHY for support of up to two S-ATA devices directly.
4. S-ATA drive transfer rate is capable of up to 150 MB/s per channel (serial speed of 1.5 Gbit/s).

For more information please visit VIA website ([www.via.com.tw](http://www.via.com.tw))



## 2.8 <Floppy Port>

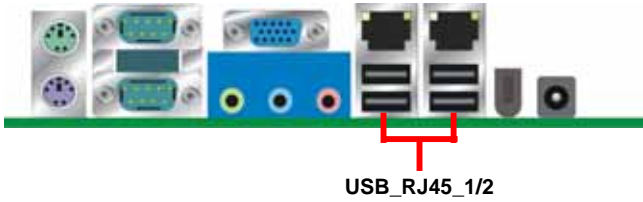
The board provides a slim type floppy port; please use the 26-pin ribbon cable in the package to connect the floppy device.



1. Lift up the brown plastic bar
2. Slot the cable in (Blue paste for brown bar side)
3. Press back the plastic bar

## 2.9 <LAN Interface>

The board provides Two GigaLAN interfaces with REALTEK 8110S-32 PCI controller, and compliant with standard IEEE 802.3 Ethernet interface for 100BASE-TX.

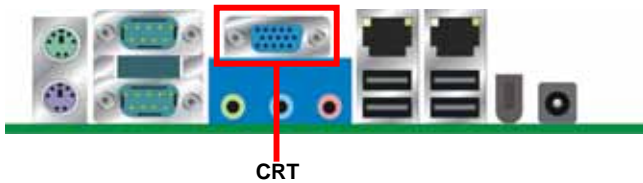


## 2.10 <Onboard Display Interface>

Based on VIA CN700, the board supports integrated S3 Graphics UniChrome Pro IGP graphics, with BIOS selectable 16/32/64MB shared with system memory for frame buffer.

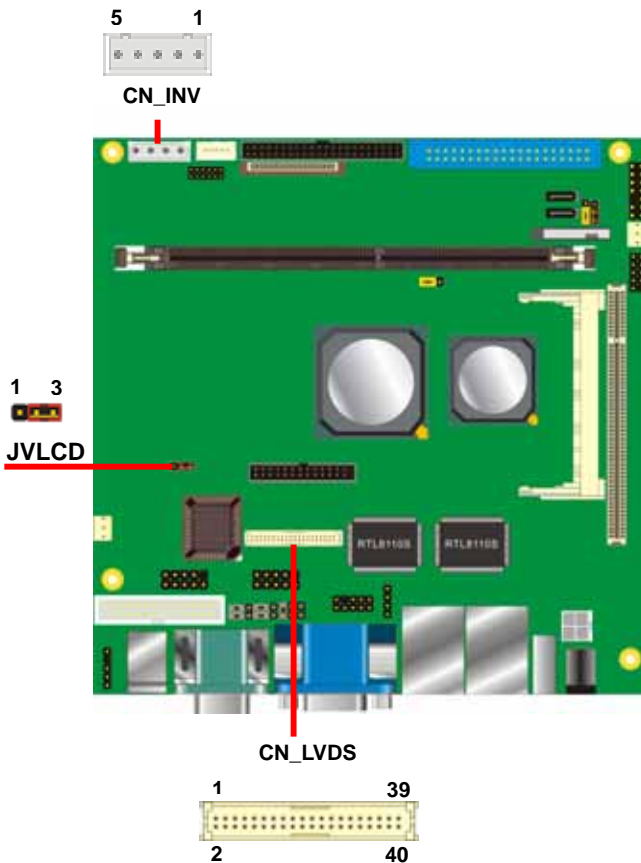
### 2.10.1 <Analog VGA Interface>

The board provides a DB15 CRT connector on the rear I/O panel.



### 2.10.2 <Digital Display>

The board provides one 40-pin LVDS connector for 18/24-bit dual channel panels, supports up to 1600 x 1200 (UXGA) of resolution, with one LCD backlight inverter connector and one jumper for panel voltage setting



Connector: **CN\_INV**

Type: 5-pin LVDS Power Header

Connector model: **JST B5B-XH-A**

Pin	Description
1	+12V
2	GND
3	GND
4	GND
5	ENABKL

Connector: **JVLCD**

Type: 3-pin Power select Header

Pin	Description
1	VCC(5V)
2	LCDVCC
3	VCC3(3.3)

Connector: **CN\_LVDS**

Type: onboard 40-pin connector for LVDS connector

Connector model: **HIROSE DF13-40DP-1.25V**

Pin	Signal	Pin	Signal
2	LCDVCC	1	LCDVCC
4	GND	3	GND
6	ATX0-	5	BTX0-
8	ATX0+	7	BTX0+
10	GND	9	GND
12	ATX1-	11	BTX1-
14	ATX1+	13	BTX1+
16	GND	15	GND
18	ATX2-	17	BTX2-
20	ATX2+	19	BTX2+
22	GND	21	GND
24	ACLK-	23	BTX3-
26	ACLK+	25	BTX3+
28	GND	27	GND
30	ATX3-	29	BCLK-
32	ATX3+	31	BCLK+
34	GND	33	GND
36	N/C	35	N/C
38	N/C	37	N/C
40	N/C	39	N/C

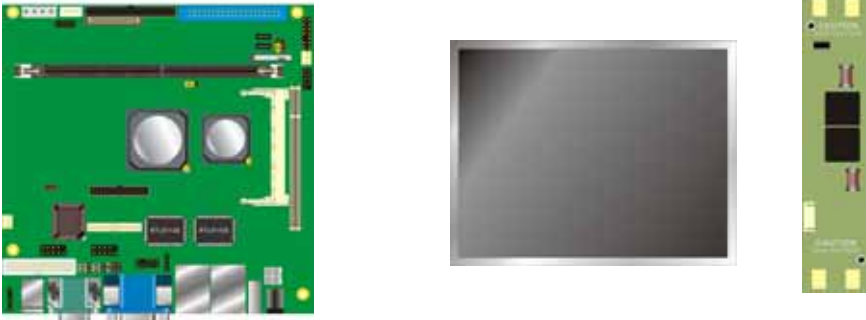
To setup the LCD, you need the component below:

1. A panel with LVDS interfaces.
2. An inverter for panel's backlight power.
3. A LCD cable and an inverter cable.

For the cables, please follow the pin assignment of the connector to make a cable, because every panel has its own pin assignment, so we do not provide a standard cable; please find a local cable manufacture to make cables.

### LCD Installation Guide:

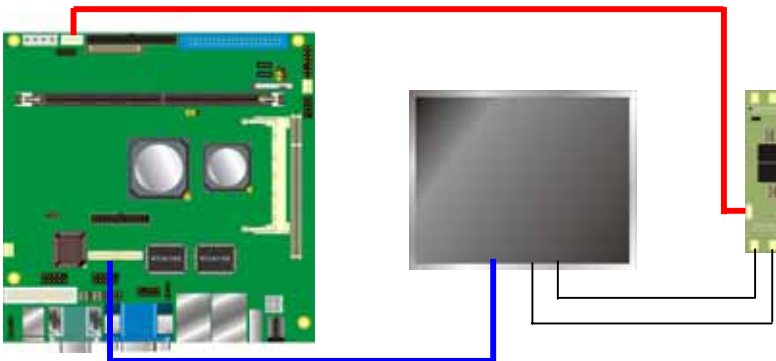
1. Preparing the LV-669X, LCD panel and the backlight inverter.



2. Please check the datasheet of the panel to see the voltage of the panel, and set the jumper **JVLCD** to +5V or +3.3V.
3. You would need a LVDS type cable.



4. To connect all of the devices well.



After setup the devices well, you need to select the LCD panel type in the BIOS.

The panel type mapping is list below:

LV-669 BIOS panel type selection form			
VGA ROM VERSION: 9Y-9X-00-20			
NO.	Resolution	Color	Channel
0	640 x 480	18	1
1	800 x 600	18	1
2	1024 x 768	18	1
3	1280 x 768	18	1
4	1280 x 1024	24	1
5	1400 x 1050	18	2
6	1600 x 1200	18	2
7	1280 x 800	18	1
8	640 x 480	18	2
9	1024 x 768	18	2
A	1024 x 768	24	1
B	1024 x 768	24	2
C	1280 x 768	24	1
D	1280 x 1024	24	2
E	1400 x 1050	24	2
F	1600 x 1200	24	2

## 2.11 <Onboard Audio Interface>

The board provides the onboard AC97 5.1-channel audio interface with Realteck ALC655.

### Connector: CN\_AUDIO

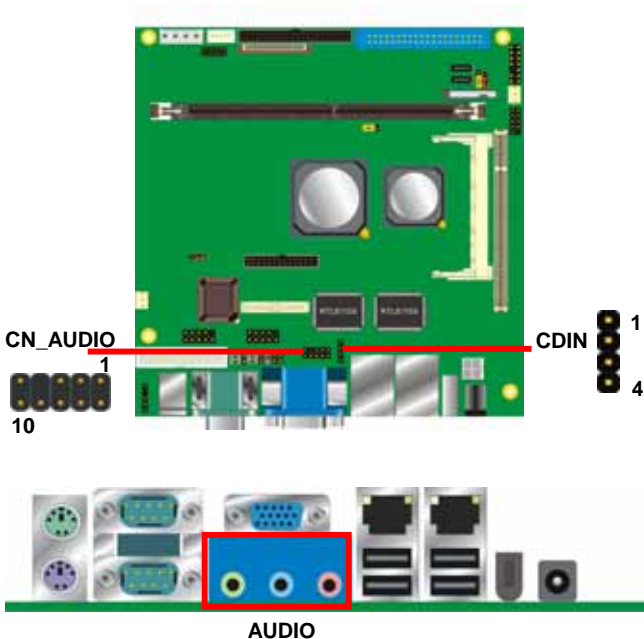
Type: 10-pin (2 x 5) header (pitch = 2.54mm)

Pin	Description	Pin	Description
1	Line/SURR – Left	2	Ground
3	Line/SURR – Right	4	MIC1/CEN
5	MIC2/LEF	6	Ground
7	N/C	8	Line Out– Left
9	Line Out – Right	10	Ground

### Connector: CDIN

Type: 4-pin header (pitch = 2.54mm)

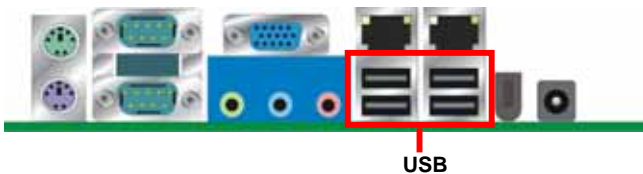
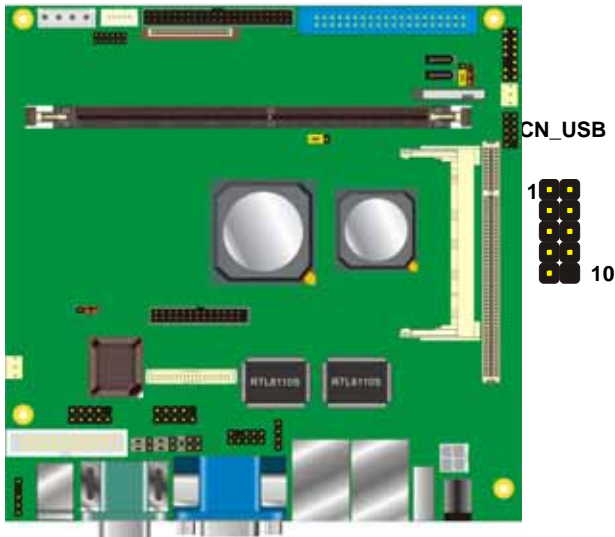
Pin	Description
1	CD – Left
2	Ground
3	Ground
4	CD – Right



## 2.12 <USB2.0 Interface>

Based on VIA VT8237R Plus, the board provides 6 USB2.0 ports. The USB2.0 interface provides up to 480Mbps of transferring rate.

Interface	USB2.0
Controller	VIA VT8237R+
Transfer Rate	Up to 480Mb/s
Output Voltage	500mA



Connector: **CN\_USB**

Type: 10-pin (5 x 2) header for USB2/3 Ports

Pin	Description	Pin	Description
1	VCC	2	VCC
3	Data0-	4	Data1-
5	Data0+	6	Data1+
7	Ground	8	Ground
9	Ground	10	N/C

PS: The USB2.0 will be only active when you connecting with the USB2.0 devices, if you insert an USB1.1 device, the port will be changed to USB1.1 protocol automatically. The transferring rate of USB2.0 as 480Mbps is depending on device capacity, exact transferring rate may not be up to 480Mbps.

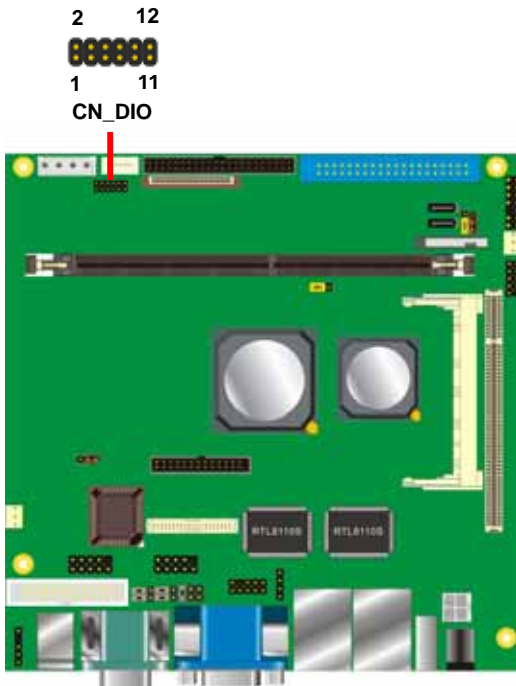
## 2.13 <GPIO Interface>

The board provides a programmable 8-bit digital I/O interface; you can use this general purpose I/O port for system control like POS or KIOSK.

Connector: **CN\_DIO**

Type: onboard 2 x 6-pin header, pitch=2.0mm

Pin	Description	Pin	Description
1	Ground	2	Ground
3	GP0	4	GP4
5	GP1	6	GP5
7	GP2	8	GP6
9	GP3	10	GP7
11	VCC	12	+12V



## 2.14 <Serial Port Jumper Setting >

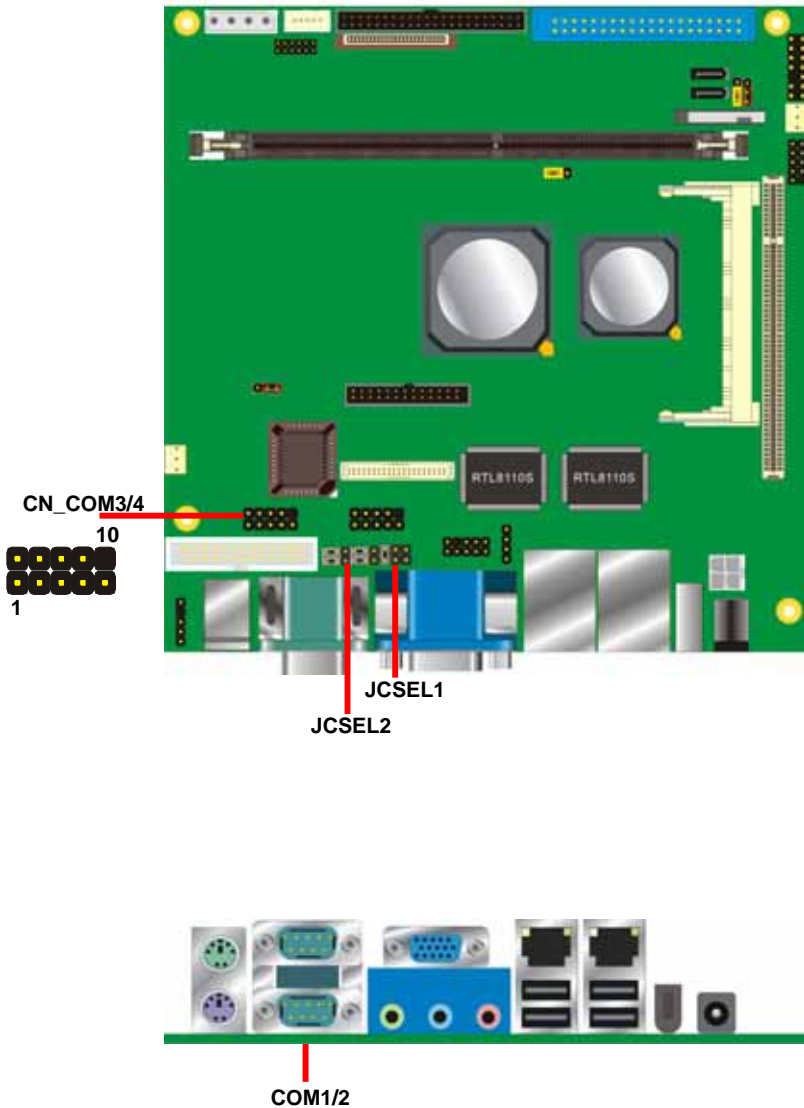
The board provides three RS232 serial ports, with jumper selectable RS422/485 for CN\_COM4.

Connector: **CN\_COM3/4**

Type: 10-pin (5 x 2) header for COM3/4

Pin	Description	Pin	Description
1	DCD/422RX-/485-	2	RXD/422RX+/485+
3	TXD/422TX+	4	DTR/422TX-
5	GND	6	DSR
7	RTS	8	CTS
9	RI	10	N/C

	JCSEL1	JCSEL2
<b>RS-232</b>		
<b>RS-485</b>		
<b>RS-422</b>		



## 2.15 <Power and Fan Connector>

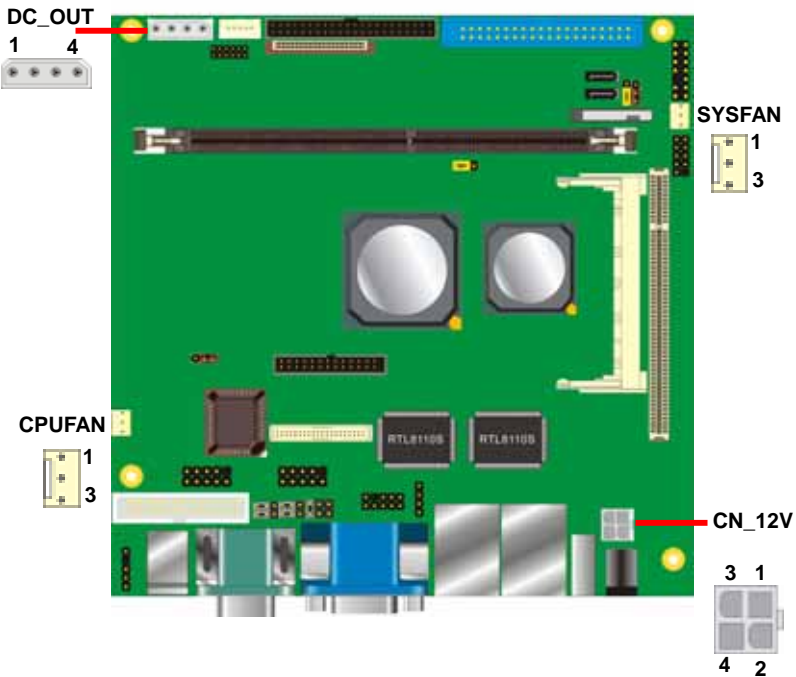
The board comes with a 2-pin DC-Jack power connector for DC 8~24V input, it also has one 4-pin P4 additional use power connector for internal power supply, you can choose one of them to meet your application.

### 2.15.1 <Power Input>

Connector:CN\_12V

Type: 4-pin DC power connector

Pin	Description	Pin	Description
1	+12V	2	+12V
3	Ground	4	Ground



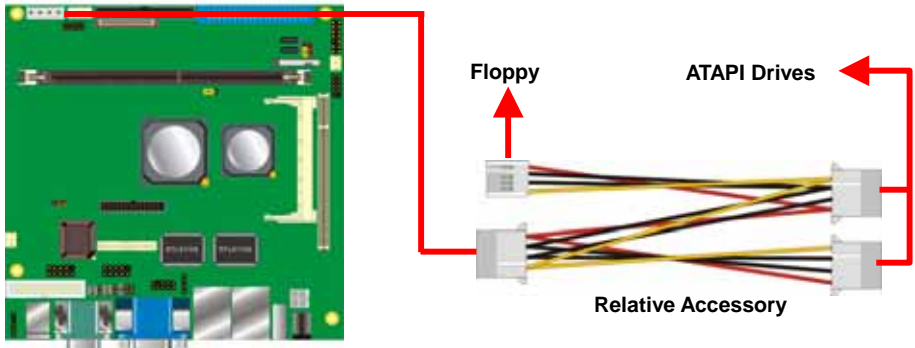
### 2.15.2 <Power Output>

Connector: **DC\_OUT**

Type: 4-pin P-type connector for +5V/+12V **output**

Pin	Description	Pin	Description	Pin	Description	Pin	Description
1	+5V	2	Ground	3	Ground	4	+12V

*Note: Maximum output voltage: 12V/5A & 5V/3A*



### 2.15.3 <Fan Connector>

Connector: **CPUFAN, SYSFAN**

Type: 3-pin fan wafer connector

Pin	Description	Pin	Description	Pin	Description
1	Ground	2	+12V	3	Fan Control

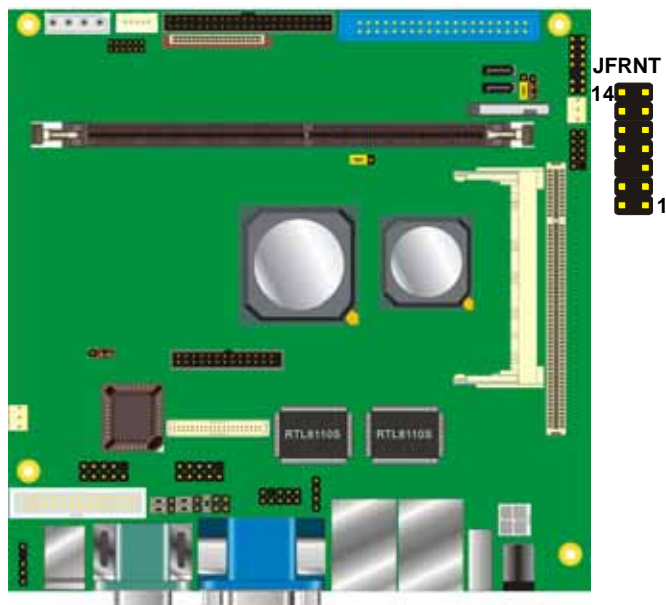
## 2.16 <Indicator and Switch>

The **JFRNT** provides front control panel of the board, such as power button, reset and beeper, etc. Please check well before you connecting the cables on the chassis.

Connector: **JFRNT**

Type: onboard 14-pin (2 x 7) 2.54-pitch header

Function	Signal	PIN		Signal	Function
IDE LED	HDLED+	1	2	PWRLED+	Power LED
	HDLED-	3	4	N/C	
Reset	Reset+	5	6	PWRLED-	Speaker
	Reset-	7	8	SPK+	
N/C		9	10	N/C	
Power Button	PWRBT+	11	12	N/C	
	PWRBT-	13	14	SPK-	



**(This Page is Left For Blank)**

## Chapter 3 <System Configuration>

### 3.1 <SATA RAID Configuration>

The board supports two Serial ATA ports onboard, and supports RAID 0, 1 and JBOD disk array, the RAID 0, 1 and JBOD are specified below:

**RAID 0 (Striping):** Two hard drives operating as one drive for optimized data R/W performance. It needs two unused drives to build this operation.

**RAID 1 (Mirroring):** Copies the data from first drive to second drive for data security, and if one drive fails, the system would access the applications to the workable drive. It needs two unused drives or one used and one unused drive to build this operation. The second drive must be the same or larger size than first one.

**JBOD (Span):** As different as RAID 0, the JBOD combines two disks as one without any fault tolerance and I/O performance enhancement.

To build Serial ATA disk array, please press <TAB> while booting up the system before entering OS, and follow the instructions to edit the RAID function.

(Selectable Functions)

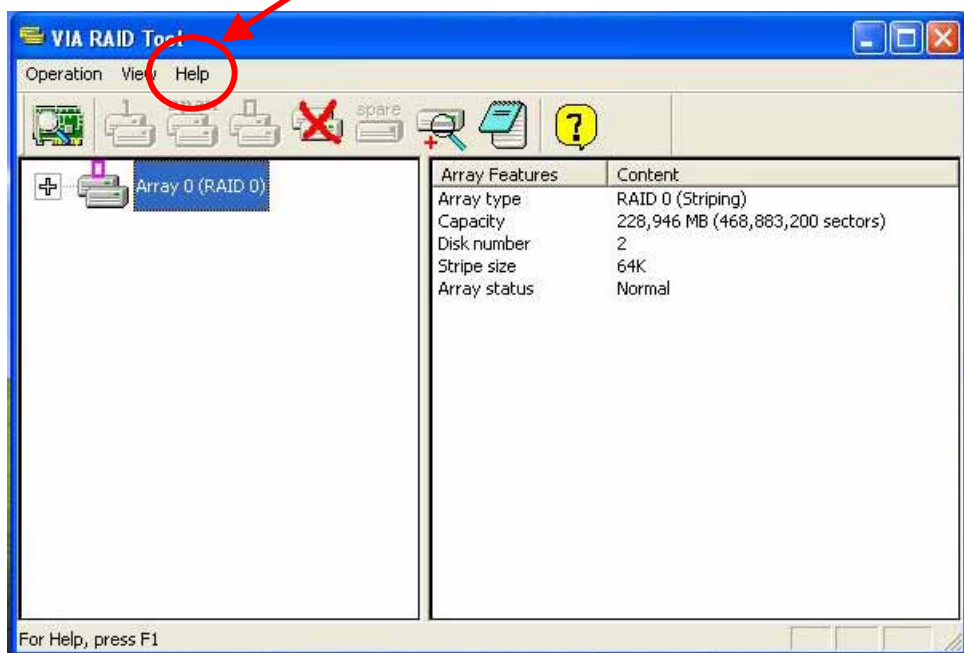
(Option Instruction)

Channel	Drive Name	Array Name	Mode	Size(GB)	Status
Serial_Cb0 Master	ST3120026AS	ARRAY 0	SATA	111.79	Boot
Serial_Ch1 Master	Maxtor 6Y12000	ARRAY 0	SATA	114.49	Boot

(Disk Statement)

You also can edit disk array under OS, please install the VIA RAID Utility in the driver CD.

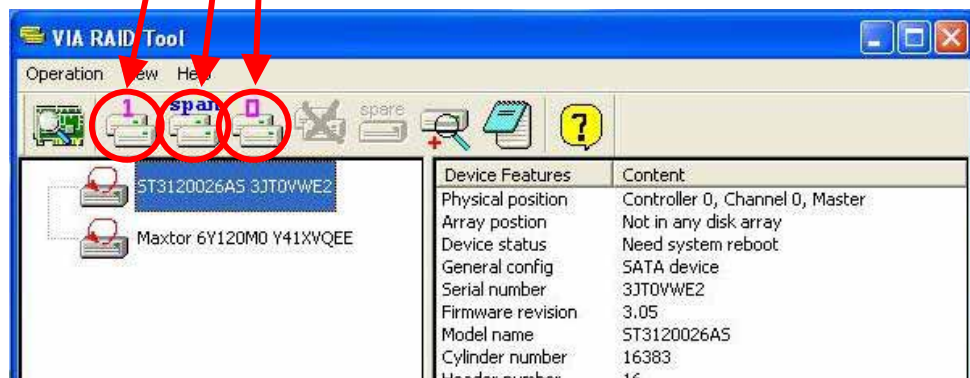
(To getting start, please click here to learn more information)



(Click here to build RAID 0)

(Click here to build RAID JBOD)

(Click here to build RAID 0)



## **3.2 <Audio Configuration>**

The board provides 5.1 channel audio interface with driver installed, please install the Realtek ALC655 audio driver in the CD before getting start to enjoy the 5.1 channel sound system.

### 3.3 <Display Configuration>

The board provides onboard analog VGA interface, and optional digital display interface with LVDS or DVI , please install the VIA video driver before enjoy the vivid display.

Based on the VIA CN700 with S3 UniChrome Pro graphic, the board provides dual display function for clone or extended desktop modes with secondary display device attached.

After installing video driver, please launch the desktop display properties.

For secondary display device, you have two options selectable.

or more display properties setting, please click "Advanced" button.

Please select S3Display for advanced device setting.

When you set dual display clone mode, you'll see the same screen display on two devices.

When you set the dual display for extended desktop mode, you can have the independent desktop on the second device.



Two controllers for each display device

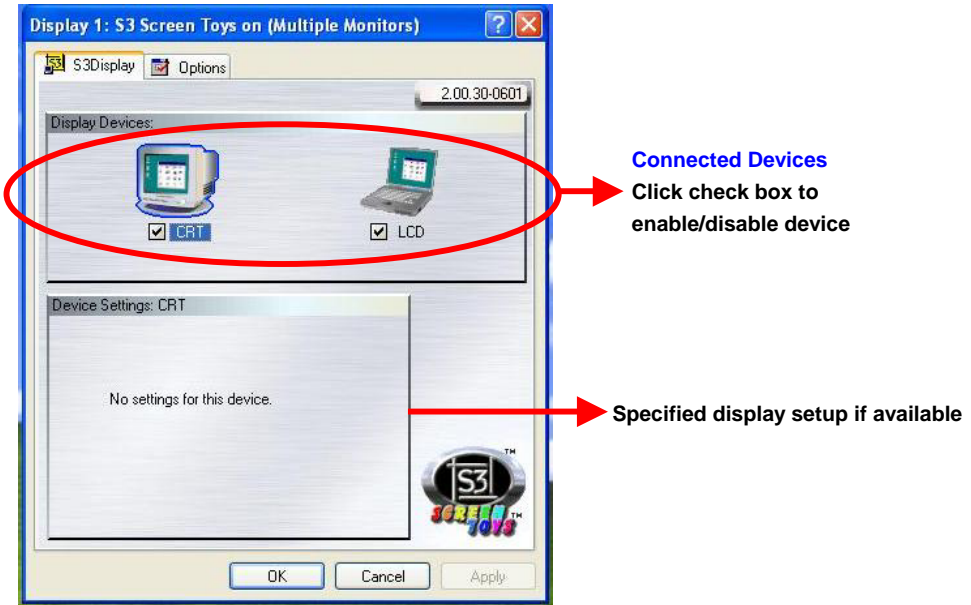


There are two options for secondary display device

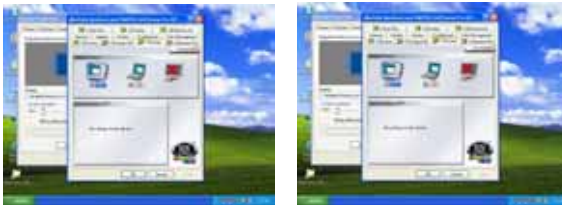


For more display properties setting, please click "Advanced" button.

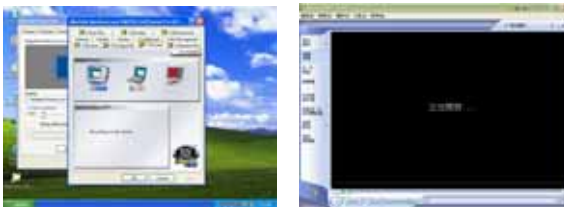
Please select S3Display for advanced device setting.



When you set dual display clone mode, you'll see the same screen display on two devices.



When you set the dual display for extended desktop mode, you can have the independent desktop on the second device.



**(This Page is Left for Blank)**

## Chapter 4 <BIOS Setup>

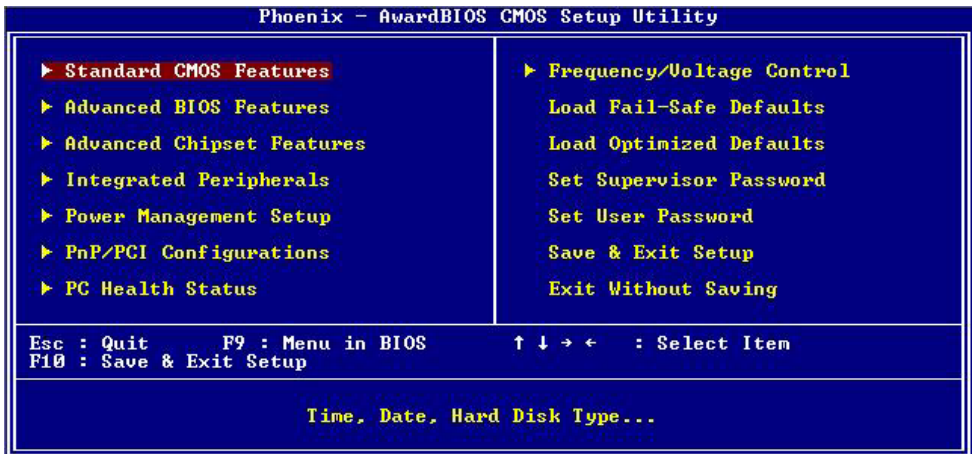
The motherboard uses the Award BIOS for the system configuration. The Award BIOS in the single board computer is a customized version of the industrial standard BIOS for IBM PC AT-compatible computers. It supports Intel x86 and compatible CPU architecture based processors and computers. The BIOS provides critical low-level support for the system central processing, memory and I/O sub-systems.

The BIOS setup program of the single board computer let the customers modify the basic configuration setting. The settings are stored in a dedicated battery-backed memory, NVRAM, retains the information when the power is turned off. If the battery runs out of the power, then the settings of BIOS will come back to the default setting.

The BIOS section of the manual is subject to change without notice and is provided here for reference purpose only. The settings and configurations of the BIOS are current at the time of print, and therefore they may not be exactly the same as that displayed on your screen.

To activate CMOS Setup program, press <DEL> key immediately after you turn on the system. The following message "Press DEL to enter SETUP" should appear in the lower left hand corner of your screen. When you enter the CMOS Setup Utility, the Main Menu will be displayed as **Figure 4-1**. You can use arrow keys to select your function, press <Enter> key to accept the selection and enter the sub-menu.

**Figure 4-1** CMOS Setup Utility Main Screen



**(This Page is Left for Blank)**

## Appendix A <I/O Port Pin Assignment>

### A.1 <IDE Port>

Connector: IDE1

Type: 40-pin (20 x 2) box header



Pin	Description	Pin	Description
1	Reset	2	Ground
3	D7	4	D8
5	D6	6	D9
7	D5	8	D10
9	D4	10	D11
11	D3	12	D12
13	D2	14	D13
15	D1	16	D14
17	D0	18	D15
19	Ground	20	VCC
21	REQ	22	Ground
23	IOW-/STOP	24	Ground
25	IOR-/HDMARDY	26	Ground
27	IRDY/DDMARDY	28	IDESEL
29	DACK-	30	Ground
31	IRQ	32	N/C
33	A1	34	CBLID
35	A0	36	A2
37	CS0 (MASTER CS)	38	CS1 (SLAVE CS)
39	LED ACT-	40	Ground

Connector: **IDE2**

Type: 44-pin (22 x 2) box header



Pin	Description	Pin	Description
1	Reset	2	Ground
3	D7	4	D8
5	D6	6	D9
7	D5	8	D10
9	D4	10	D11
11	D3	12	D12
13	D2	14	D13
15	D1	16	D14
17	D0	18	D15
19	Ground	20	N/C
21	REQ	22	Ground
23	IOW-/STOP	24	Ground
25	IOR-/HDMARDY	26	Ground
27	IRDY/DDMARDY	28	Ground
29	DACK-	30	Ground
31	IRQ	32	N/C
33	A1	34	SD
35	A0	36	A2
37	CS1	38	CS3
39	ASP1	40	Ground
41	Vcc	42	Vcc
43	Ground	44	Ground

## A.2 <Floppy Port>

Connector: **FDD**



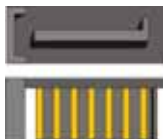
Type: 26-pin connector

Pin	Description	Pin	Description
1	VCC	2	INDEX
3	VCC	4	DRV0
5	VCC	6	DSKCHG
7	DRV1	8	N/C
9	MTR1	10	MTR0
11	RPM	12	DIR
13	N/C	14	STEP
15	Ground	16	WRITE DATA
17	Ground	18	WRITE GATE
19	N/C	20	TRACK 0
21	N/C	22	WRPTR
23	Ground	24	RDATA-
25	Ground	26	SEL

## A.3 <Serial ATA Port>

Connector: **SATA1/2**

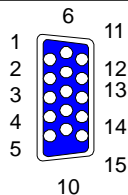
1 7



Type: 7-pin wafer connector

1	2	3	4	5	6	7
GND	RSATA_TXP1	RSATA_TXN1	GND	RSATA_RXN1	RSATA_RXP1	GND

## A.4 < CRT Port >

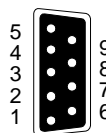


Connector: CRT

Type: 15-pin D-sub female connector on panel

Pin	Description	Pin	Description	Pin	Description
1	RED	6	Ground	11	N/C
2	GREEN	7	Ground	12	5VCD A
3	BLUE	8	Ground	13	HSYNC
4	N/C	9	LVGA5V	14	VS YNC
5	Ground	10	Ground	15	5VCLK

## A.5 <Serial Port>



Connector: COM1/2

Type: 9-pin D-sub male connector on rear panel

Pin	Description	Pin	Description
1	DCD	6	DSR
2	SIN	7	RTS
3	SO	8	CTS
4	DTR	9	RI
5	Ground		

## A.6 <LAN Port>

Connector: RJ45\_1/2

Type: RJ45 connector with LED on rear panel



Pin	1	2	3	4	5	6	7	8
Description	TX+	TX-	RX+	N/C	N/C	RX-	N/C	N/C

## Appendix B <Flash BIOS>

### B.1 BIOS Auto Flash Tool

The board is based on Award BIOS and can be updated easily by the BIOS auto flash tool. You can download the tool online at the address below:

<http://www.award.com>

File name of the tool is "awdf flash.exe", it's the utility that can write the data into the BIOS flash chip and update the BIOS.

### B.2 Flash Method

1. Please make a bootable floppy disk.
2. Get the last .bin files you want to update and copy it into the disk.
3. Copy awardflash.exe to the disk.
4. Power on the system and flash the BIOS. (Example: C:/ awardflash XXX.bin)
5. Re-start the system.

## Appendix C <System Resources>

### C1.<I/O Port Address Map>

[00000000 - 00000CF7]	PCI bus
[00000000 - 0000000F]	Direct memory access controller
[00000010 - 0000001F]	Motherboard resources
[00000020 - 00000021]	Programmable interrupt controller
[00000022 - 0000003F]	Motherboard resources
[00000040 - 00000043]	System timer
[00000044 - 0000005F]	Motherboard resources
[00000060 - 00000060]	Standard 101/102-Key or Microsoft Natural PS/2 Keyboard
[00000061 - 00000061]	System speaker
[00000062 - 00000063]	Motherboard resources
[00000064 - 00000064]	Standard 101/102-Key or Microsoft Natural PS/2 Keyboard
[00000065 - 0000006F]	Motherboard resources
[00000070 - 00000073]	System CMOS/real time clock
[00000074 - 0000007F]	Motherboard resources
[00000080 - 00000090]	Direct memory access controller
[00000091 - 00000093]	Motherboard resources
[00000094 - 0000009F]	Direct memory access controller
[000000A0 - 000000A1]	Programmable interrupt controller
[000000A2 - 000000BF]	Motherboard resources
[000000C0 - 000000DF]	Direct memory access controller
[000000E0 - 000000EF]	Motherboard resources
[00000170 - 00000177]	Secondary IDE Channel
[000001F0 - 000001F7]	Primary IDE Channel
[00000274 - 00000277]	ISAPNP Read Data Port
[00000279 - 00000279]	ISAPNP Read Data Port
[00000294 - 00000297]	Motherboard resources
[000002E8 - 000002EF]	Communications Port (COM4)
[000002F8 - 000002FF]	Communications Port (COM2)
[00000376 - 00000376]	Secondary IDE Channel
[00000378 - 0000037F]	Printer Port (LPT1)
[000003B0 - 000003BB]	VIA CPU to AGP2.0/AGP3.0 Controller
[000003C0 - 000003DF]	VIA CPU to AGP2.0/AGP3.0 Controller
[000003C0 - 000003DF]	VIA/S3G UniChrome Pro IGP

[000003E8 - 000003EF]	Communications Port (COM3)
[000003F2 - 000003F5]	Standard floppy disk controller
[000003F6 - 000003F6]	Primary IDE Channel
[000003F7 - 000003F7]	Standard floppy disk controller
[000003F8 - 000003FF]	Communications Port (COM1)
[00000400 - 0000047F]	Motherboard resources
[000004D0 - 000004D1]	Motherboard resources
[00000500 - 0000050F]	Motherboard resources
[00000778 - 0000077B]	Printer Port (LPT1)
[00000A79 - 00000A79]	ISAPNP Read Data Port
[00000D00 - 0000FFFF]	PCI bus
[0000D000 - 0000DFFF]	VIA CPU to AGP2.0/AGP3.0 Controller
[0000EE00 - 0000EEFF]	Realtek AC'97 Audio for VIA (R) Audio Controller
[0000F000 - 0000F0FF]	Realtek RTL8169/8110 Family Gigabit Ethernet NIC
[0000F200 - 0000F2FF]	Realtek RTL8169/8110 Family Gigabit Ethernet NIC #2
[0000F400 - 0000F4FF]	VIA SATA RAID Controller
[0000F600 - 0000F61F]	VIA Rev 5 or later USB Universal Host Controller
[0000F700 - 0000F71F]	VIA Rev 5 or later USB Universal Host Controller
[0000F800 - 0000F81F]	VIA Rev 5 or later USB Universal Host Controller
[0000F900 - 0000F91F]	VIA Rev 5 or later USB Universal Host Controller
[0000FA00 - 0000FA0F]	VIA Bus Master IDE Controller - 0571
[0000FB00 - 0000FB0F]	VIA SATA RAID Controller
[0000FC00 - 0000FC03]	VIA SATA RAID Controller
[0000FD00 - 0000FD07]	VIA SATA RAID Controller
[0000FE00 - 0000FE03]	VIA SATA RAID Controller
[0000FF00 - 0000FF07]	VIA SATA RAID Controller

## C2.<Memory Address Map>

[00000000 - 0009FFFF]	System board
[000A0000 - 000BFFFF]	PCI bus
[000A0000 - 000BFFFF]	VIA CPU to AGP2.0/AGP3.0 Controller
[000A0000 - 000BFFFF]	VIA/S3G UniChrome Pro IGP
[000C0000 - 000DFFFF]	PCI bus
[000CF200 - 000CFFFF]	System board
[000F0000 - 000F7FFF]	System board
[000F8000 - 000FBFFF]	System board
[000FC000 - 000FFFFF]	System board
[00100000 - 4BEDFFFF]	System board
[4BEE0000 - 4BEFFFFF]	System board
[4BF00000 - FEBFFFFF]	PCI bus
[E8000000 - EFFFFFFF]	VIA CPU to AGP2.0/AGP3.0 Controller
[F4000000 - F7FFFFFF]	VIA CPU to AGP2.0/AGP3.0 Controller
[F4000000 - F7FFFFFF]	VIA/S3G UniChrome Pro IGP
[FB000000 - FCFFFFFF]	VIA CPU to AGP2.0/AGP3.0 Controller
[FB000000 - FBFFFFFF]	VIA/S3G UniChrome Pro IGP
[FDFFC000 - FDFFC0FF]	Standard Enhanced PCI to USB Host Controller
[FDFFD000 - FDFFD0FF]	Realtek RTL8169/8110 Family Gigabit Ethernet NIC #2
[FDFFE000 - FDFFE0FF]	Realtek RTL8169/8110 Family Gigabit Ethernet NIC
[FDFFF000 - FDFFF0FF]	OHCI Compliant IEEE 1394 Host Controller
[FEC00000 - FEC00FFF]	System board
[FEE00000 - FEE00FFF]	System board
[FFF80000 - FFFF0FFF]	System board
[FFFF0000 - FFFFFFFF]	System board

### C3.<System IRQ Resources>

(ISA) 0	System timer
(ISA) 1	Standard 101/102-Key or Microsoft Natural PS/2 Keyboard
(ISA) 3	Communications Port (COM2)
(ISA) 4	Communications Port (COM1)
(ISA) 6	Standard floppy disk controller
(ISA) 8	System CMOS/real time clock
(ISA) 9	Microsoft ACPI-Compliant System
(ISA) 10	Communications Port (COM3)
(ISA) 11	Communications Port (COM4)
(ISA) 12	PS/2 Compatible Mouse
(ISA) 13	Numeric data processor
(ISA) 14	Primary IDE Channel
(ISA) 15	Secondary IDE Channel
(PCI) 16	VIA/S3G UniChrome Pro IGP
(PCI) 20	VIA SATA RAID Controller
(PCI) 21	OHCI Compliant IEEE 1394 Host Controller
(PCI) 21	Standard Enhanced PCI to USB Host Controller
(PCI) 21	VIA Rev 5 or later USB Universal Host Controller
(PCI) 21	VIA Rev 5 or later USB Universal Host Controller
(PCI) 21	VIA Rev 5 or later USB Universal Host Controller
(PCI) 21	VIA Rev 5 or later USB Universal Host Controller
(PCI) 22	Realtek AC'97 Audio for VIA (R) Audio Controller
(PCI) 22	Realtek RTL8169/8110 Family Gigabit Ethernet NIC
(PCI) 23	Realtek RTL8169/8110 Family Gigabit Ethernet NIC #2

## Appendix D <Watch Dog timer Setting >

The watchdog timer makes the system auto-reset while it stops to work for a period. The integrated watchdog timer can be setup as system reset mode by program.

### Timeout Value Range

- 1 to 255
- Second or Minute

### Program Sample

Watchdog timer setup as system reset with 5 second of timeout

---

```

2E, 87
2E, 87
2E, 07
2F, 08      Logical Device 8
2E, 30      Activate
2F, 01
2E, F5      Set as Second*
2F, 00
2E, F6      Set as 5
2F, 05

```

---

\* Minute: bit 3 = 0; Second: bit 3 = 1

You can select Timer setting in the BIOS, after setting the time options, the system will reset according to the period of your selection.



**(This Page is Left for Blank)**

Any advice or comment about our products and service, or anything we can help you please don't hesitate to contact with us. We will do our best to support you for your products, projects and business.

Annso Technology Co.,LTD

---

Address      The south faces industry area of Xia Gang Fu Hai road,  
Chang'an Town,Dongguan City, Guangdong, China

TEL            [+86-769-81666306](tel:+86-769-81666306)

FAX            [+86-769-81666306](tel:+86-769-81666306)

Website       <http://www.annso.com>

E-Mail        [sales@annso.com.cn](mailto:sales@annso.com.cn)

---